



How to operate mToken/ PromToken

- 1) insert the mToken with your system
- 2) After that go to the My Computer here show the Cryptoid_Setup.
- 3) you can use the mToken, you must install the Runtime library. Execute Cryptoid_Setup_V2.The following welcome interface appears:



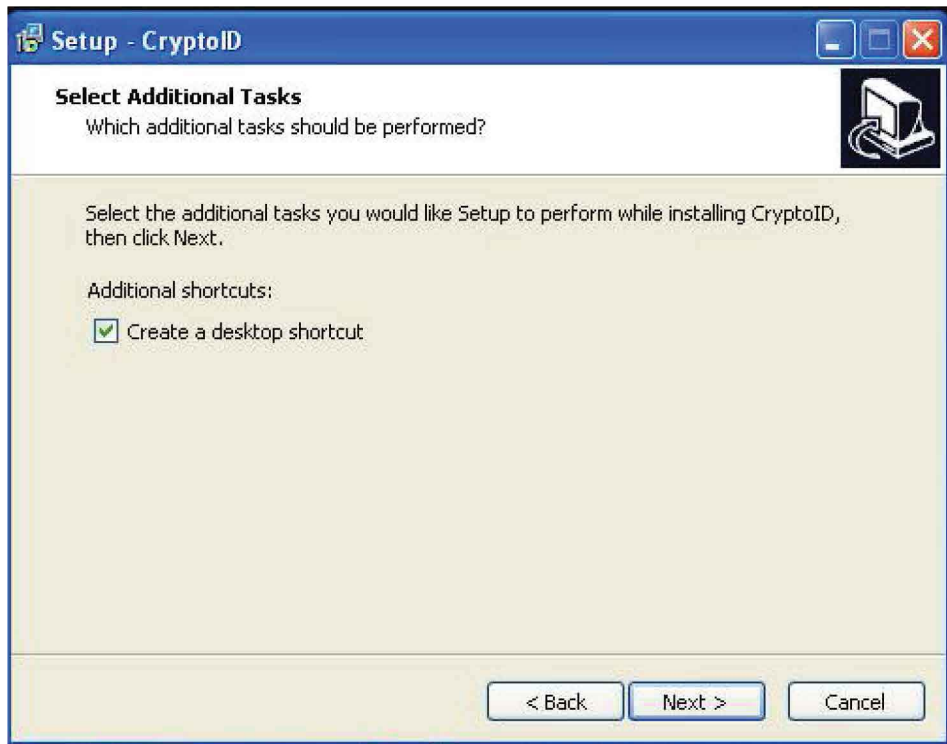
1. Click "Next", the following select install path interface appears:



2. Click "Next", the following select install path interface appears:



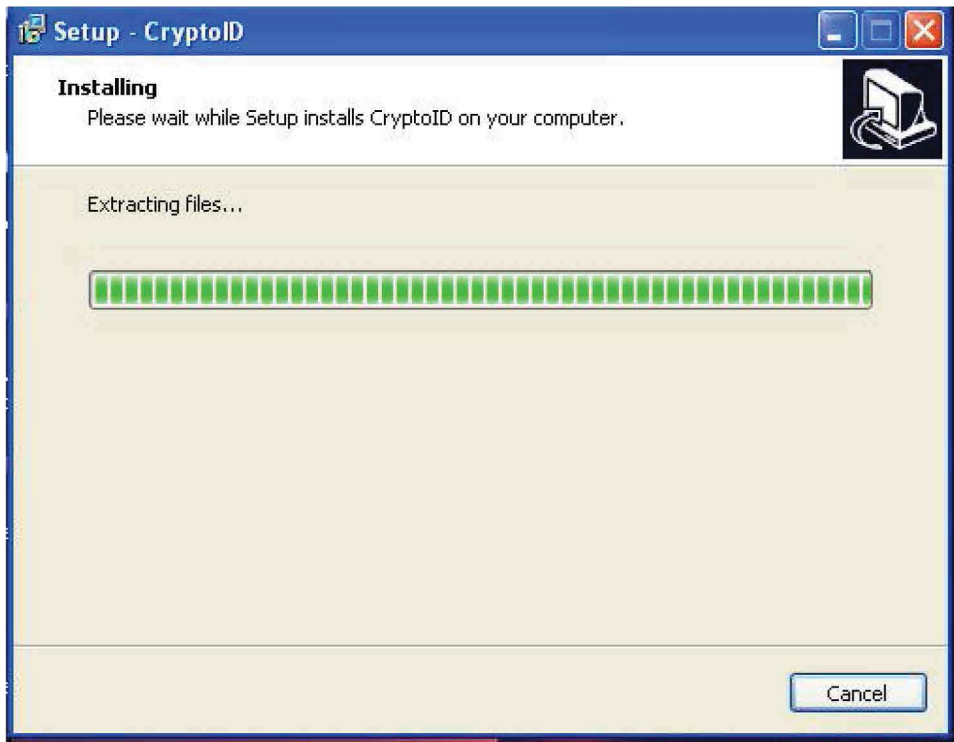
3. Click "Next", the following select install path interface appears:



5. Click "Install" the following interface appears:



6. Click "Install" to continue, the following interface appears:



7. After install process finish, the following interface appears:

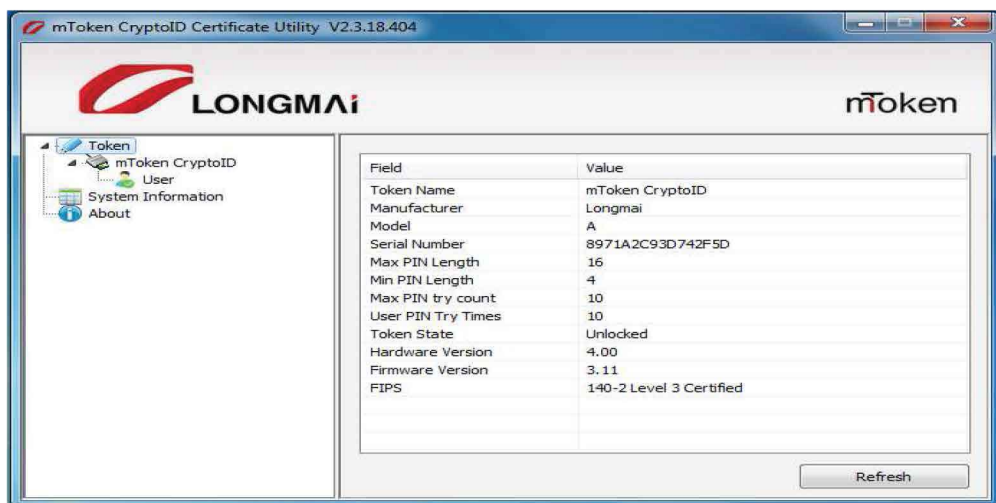
(n)Code Solutions

e-Safe . e-Secure . e-Sure .



8. Click “Finish” to finish the installation.

After installation automatically create one symbol in your desktop Name : CryptoID Certificate Utility
Click on this Icon open below screen :



Thanking you
Professional Digisign eServices Pvt Ltd
209 ,Patil Plaza swargate Pune-09
Ph- 020 49105678
www.getmtokens.com